

Date: 11/08/2023.

West Bengal Real Estate Regulatory Authority  
Calcutta Green's Commercial complex, 1<sup>st</sup> Floor,  
1050/2, Survey Park, Kolkata- 700075.

Sub: Location Details of Project

Sir,

We are enclosing herewith the location details of the project NEVADA, with clear demarcation of land dedicated for the project along with its boundaries including the latitude and longitude of the end points of the project.

Thanking you

Yours faithfully,

Salasarshyam Realtech LLP

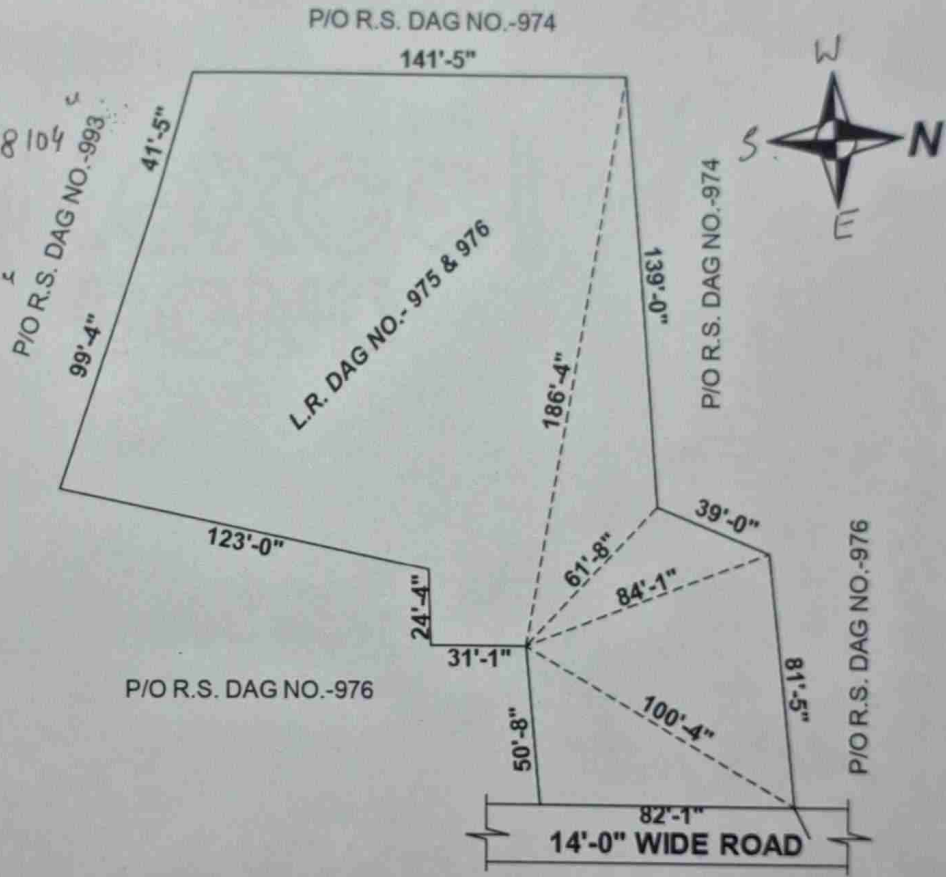
Partner

A SITE PLAN AT MAUZA - DAKSHINDARI, JL NO.- 25, RE. SU. NO.-R.S. & L.R. DAG NO.- 975 & 976, L.R. KHATIAN NO.-995 & 996, WARD NO.-33, HOLDING NO.-1207, P.S.- LAKE TOWN, UNDER SOUTH DUMDUM MUNICIPALITY, DIST- NORTH 24 PARGANAS,

AREA SHOWN BY RED MARK-   
AREA OF PLOT - 55 K.11 CH.23 SFT (M/L)

SCALE- 1"=56'

LATITUDE - 22.6008  
N 22°36'2.88104"  
LONGITUDE - 88.39931  
E 88°23'57.50542"



Salasarshyam Realtech LLP

Partner